

Investment Performance Review
Period Ending September 30, 2023

Indialantic Police Officers' & Firefighters' Retirement System 60T Report

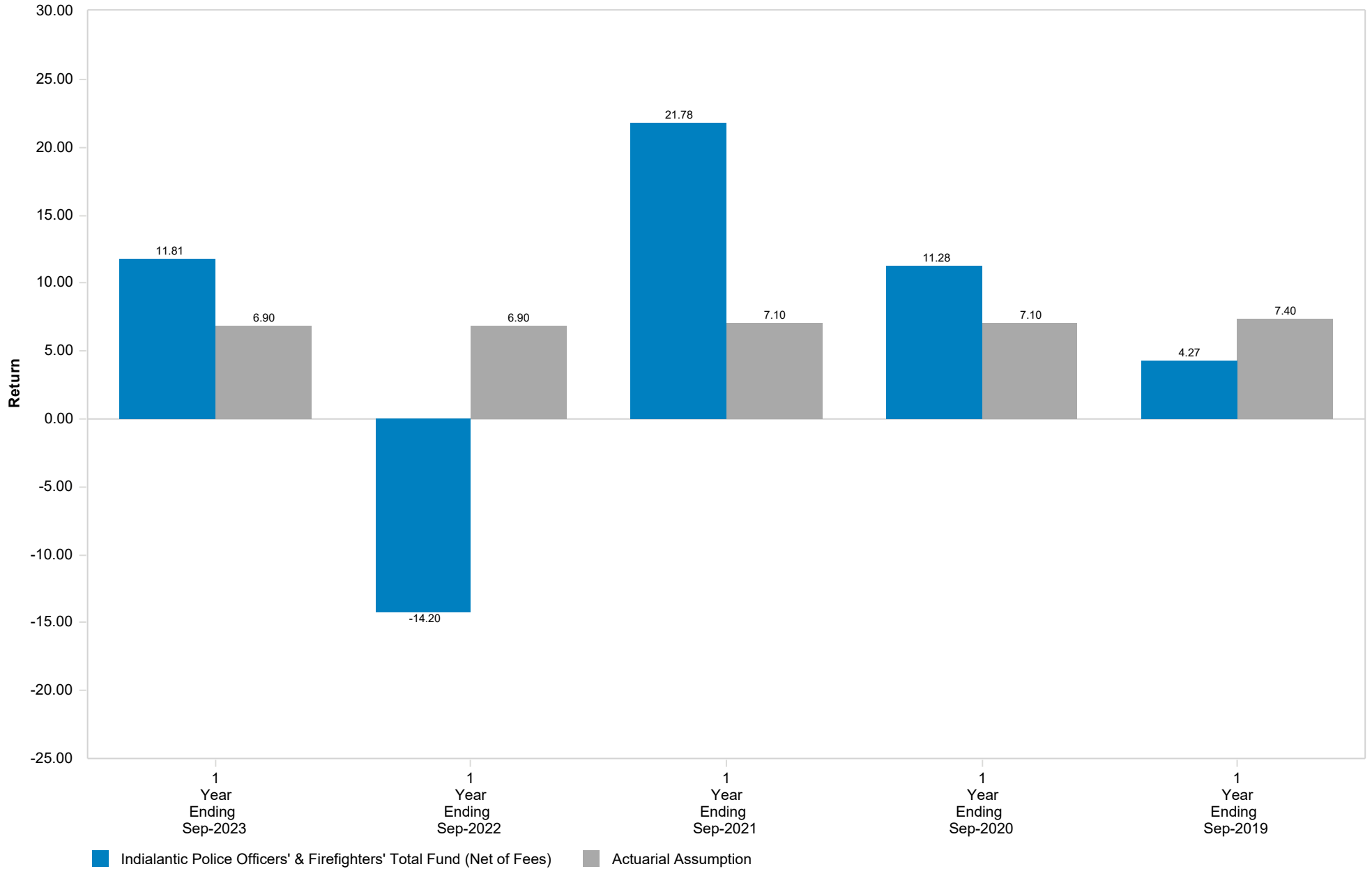


Indialantic Police Officers' & Firefighters' Retirement System
Asset Allocation History
As of September 30, 2023

Asset Allocation Attributes	Sep-2023		Sep-2022		Sep-2021		Sep-2020		Sep-2019	
	(\$)	%	(\$)	%	(\$)	%	(\$)	%	(\$)	%
Domestic Equity	4,906,330	49.78	4,509,099	49.72	5,815,125	51.65	4,922,813	51.27	4,500,914	50.94
International Equity	1,334,718	13.54	1,082,560	11.94	1,700,886	15.11	1,496,578	15.59	1,301,723	14.73
Domestic Fixed Income	1,654,274	16.79	1,392,878	15.36	2,013,724	17.89	1,756,162	18.29	1,650,691	18.68
Non-Core Fixed Income	608,748	6.18	550,447	6.07	572,210	5.08	440,020	4.58	432,143	4.89
Real Estate	1,189,054	12.06	1,400,371	15.44	984,221	8.74	822,940	8.57	818,799	9.27
Cash & Equivalent	162,472	1.65	133,197	1.47	171,870	1.53	162,600	1.69	130,978	1.48
Total Fund	9,855,596	100.00	9,068,553	100.00	11,258,037	100.00	9,601,113	100.00	8,835,248	100.00



Comparative Performance Net of Fees



AndCo compiled this report for the sole use of the client for which it was prepared. AndCo is responsible for evaluating the performance results of the Total Fund along with the investment advisors by comparing their performance with indices and other related peer universe data that is deemed appropriate. AndCo uses the results from this evaluation to make observations and recommendations to the client.

AndCo uses time-weighted calculations which are founded on standards recommended by the CFA Institute. The calculations and values shown are based on information that is received from custodians. AndCo analyzes transactions as indicated on the custodian statements and reviews the custodial market values of the portfolio. As a result, this provides AndCo with a reasonable basis that the investment information presented is free from material misstatement. This methodology of evaluating and measuring performance provides AndCo with a practical foundation for our observations and recommendations. Nothing came to our attention that would cause AndCo to believe that the information presented is significantly misstated.

This performance report is based on data obtained by the client's custodian(s), investment fund administrator, or other sources believed to be reliable. While these sources are believed to be reliable, the data providers are responsible for the accuracy and completeness of their statements. Clients are encouraged to compare the records of their custodian(s) to ensure this report fairly and accurately reflects their various asset positions.

The strategies listed may not be suitable for all investors. We believe the information provided here is reliable, but do not warrant its accuracy or completeness. Past performance is not an indication of future performance. Any information contained in this report is for informational purposes only and should not be construed to be an offer to buy or sell any securities, investment consulting, or investment management services.

Additional information included in this document may contain data provided by from index databases, public economic sources and the managers themselves.

This document may contain data provided by Bloomberg Barclays. Bloomberg Barclays Index data provided by way of Barclays Live.

This document may contain data provided by Standard and Poor's. Nothing contained within any document, advertisement or presentation from S&P Indices constitutes an offer of services in jurisdictions where S&P Indices does not have the necessary licenses. All information provided by S&P Indices is impersonal and is not tailored to the needs of any person, entity or group of persons. Any returns or performance provided within any document is provided for illustrative purposes only and does not demonstrate actual performance. Past performance is not a guarantee of future investment results.

This document may contain data provided by MSCI, Inc. Copyright MSCI, 2017. Unpublished. All Rights Reserved. This information may only be used for your internal use, may not be reproduced or disseminated in any form and may not be used to create any financial instruments or products or any indices. This information is provided on an "as is" basis and the user of this information assumes the entire risk of any use it may make or permit to be made of this information. Neither MSCI, any of its affiliates or any other person involved in or related to compiling, computing or creating this information makes any express or implied warranties or representations with respect to such information or the results to be obtained by the use thereof, and MSCI, its affiliates and each such other person hereby expressly disclaim all warranties (including, without limitation, all warranties of originality, accuracy, completeness, timeliness, non-infringement, merchantability and fitness for a particular purpose) with respect to this information. Without limiting any of the foregoing, in no event shall MSCI, any of its affiliates or any other person involved in or related to compiling, computing or creating this information have any liability for any direct, indirect, special, incidental, punitive, consequential or any other damages (including, without limitation, lost profits) even if notified of, or if it might otherwise have anticipated, the possibility of such damages.

This document may contain data provided by Russell Investment Group. Russell Investment Group is the source owner of the data contained or reflected in this material and all trademarks and copyrights related thereto. The material may contain confidential information and unauthorized use, disclosure, copying, dissemination or redistribution is strictly prohibited. This is a user presentation of the data. Russell Investment Group is not responsible for the formatting or configuration of this material or for any inaccuracy in presentation thereof.

This document may contain data provided by Morningstar. All rights reserved. Use of this content requires expert knowledge. It is to be used by specialist institutions only. The information contained herein: (1) is proprietary to Morningstar and/or its content providers; (2) may not be copied, adapted or distributed; and (3) is not warranted to be accurate, complete or timely. Neither Morningstar nor its content providers are responsible for any damages or losses arising from any use of this information, except where such damages or losses cannot be limited or excluded by law in your jurisdiction. Past financial performance is not guarantee of future results.



Clients first.



CHICAGO | CLEVELAND | DALLAS | DETROIT | ORLANDO | PITTSBURGH | RENO

AndCo Consulting | (844) 44-ANDCO | *AndCoConsulting.com*

